

JFS DELAWARE 2021 ANNUAL REPORT

Dear Friends,

2021 was a dynamic, productive, and unique year for JFS Delaware and we are grateful for your continued support!

Whether in offices, homes, schools, or community spaces, JFS services have grown, new programs have begun, and vital collaborations have flourished. JFS welcomed and cared for refugees and asylees from all over the world, supported individuals and families from across our state, and built upon our strengths to deliver the highest quality services for all.

From the launch of mental health programs addressing youth anxiety and maternal mental health to the continued support for older adults and caregivers, JFS Delaware meets the needs of our community and provides our comprehensive services to everyone, regardless of their background, challenges, or circumstances. This is made possible not only by the talent and compassion of our staff, but by the increased and continued support from volunteers, donors, partners, and friends like you.

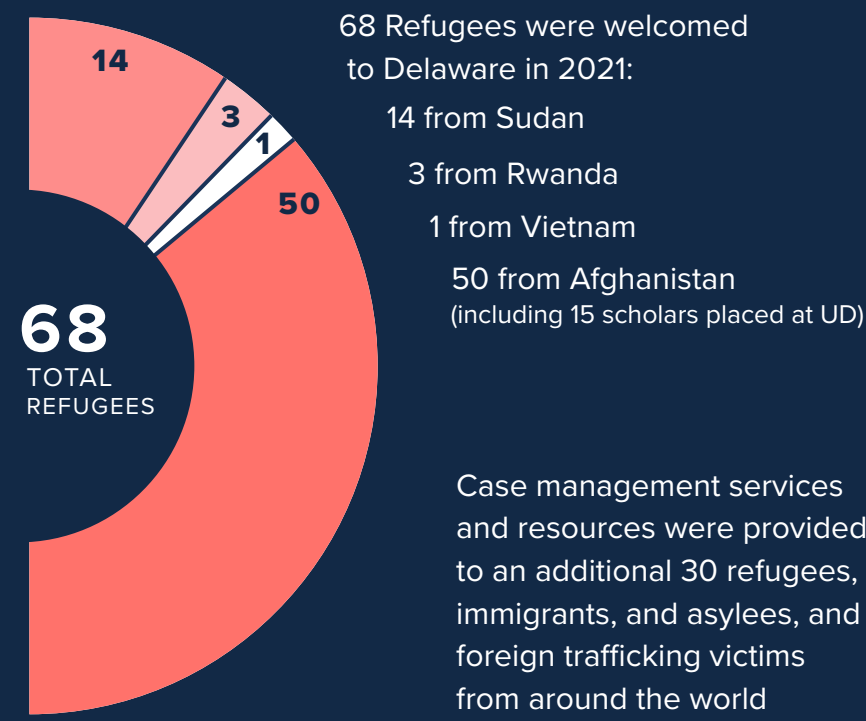
We appreciate every person who has helped JFS ensure members of our community connect with critical resources, heal through complex challenges, and build the confidence and resilience they need to thrive. The statistics and testimonials published here only begin to tell the story of our accomplishments in 2021—the impact of your support goes well beyond the margins of this page.

With gratitude and wishes for continued good health and wellbeing,

Clint Walker
Board Chair

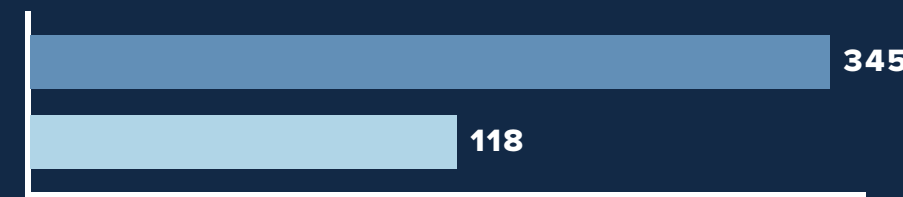
Regina Kerr Alonzo
Interim CEO

REFUGEE SERVICES

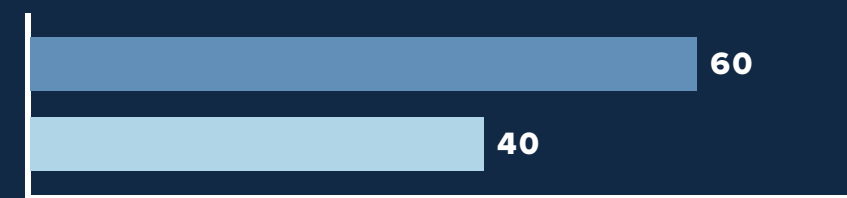


Case management services and resources were provided to an additional 30 refugees, immigrants, and asylees, and foreign trafficking victims from around the world

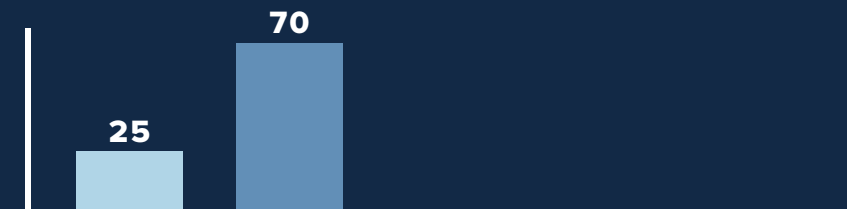
SUPPORT SERVICES



345 individuals received case management, coaching, and resources, including 118 parents and caregivers enrolled in the Promoting Safe & Stable Family program

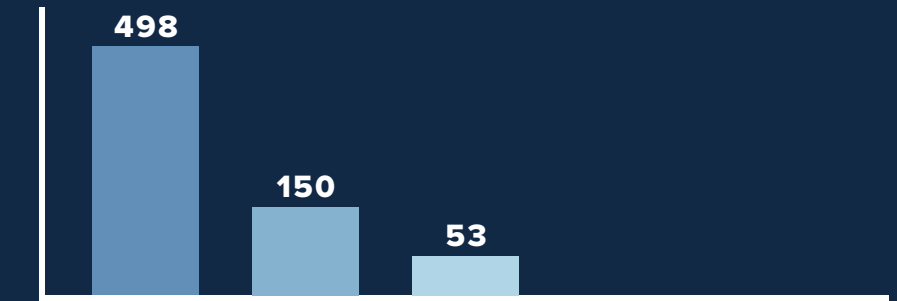
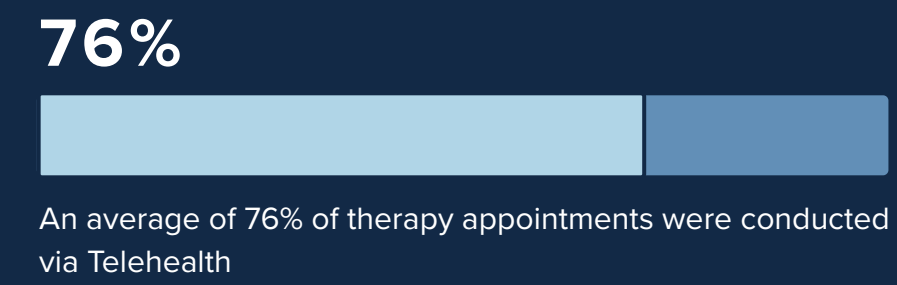


The Employment Support Network maintained an average of 60 active program participants, with an average of 40 individuals gaining employment within 6 months



JFS staff, volunteers, and donors assembled and distributed 25 thanksgiving baskets and 70 customized holiday bags

MENTAL HEALTH

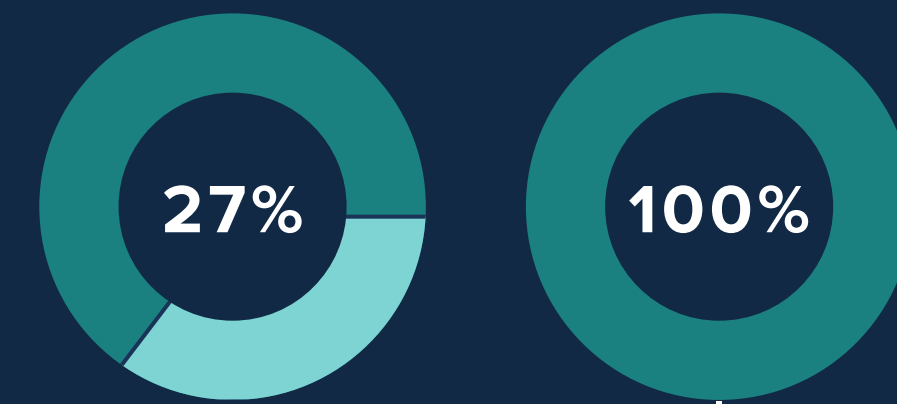


JFS averaged 700 therapy clients per quarter: 498 in Wilmington, 150 in Lewes, and 53 from out of state

JFS launched a new program to address the rise of youth anxiety, including group sessions in 4 Delaware schools

Maternal mental health training was completed by 3 JFS therapists to offer specialized support to women and their families

OLDER ADULT SERVICES



Out of 85 total individuals served by Care Navigation, 27% were new clients

100% of older adults enrolled in the Care Navigation program reported increased feelings of being supported



30 patients and 50 caregivers received personalized dementia care from COMPASS' interdisciplinary team

208 residents of B'nai B'rith House maintained independent housing with support from JFS' Resident Services Coordinator

“THIS IS MY FIRST GOOD EXPERIENCE WITH GETTING HELP IN A LONG TIME.”

THE JFS TEAM



JFS experienced growth among staff and welcomed: 4 leaders, 2 refugee case managers, 5 clinicians, and 10 interns



Over 200 volunteers were engaged with JFS' mission and services, including the implementation of 10 Circles of Care through local congregations and community groups

FINANCIALS



REVENUE	%	SOURCE
\$ 1,812,494	36	Government Grants & Contracts
\$ 611,542	12	Other Grants
\$ 1,998,251	40	Program Revenue
\$ 400,349	8	Contributions
\$ 43,698	1	United Way
\$ 100,000	2	Jewish Federation of Delaware
\$ 4,966,334		TOTAL



EXPENSES	%	DEPARTMENT
\$ 2,581,131	56	Counseling
\$ 396,918	9	Care Management
\$ 560,993	12	Youth & Family
\$ 898,091	19	Management & General
\$ 187,382	4	Fundraising
\$ 4,624,515		TOTAL

The 2021 audit was completed by Belfint, Lyons & Shuman, P.A., Certified Public Accountants. Comprehensive audit information is available at jfsdelaware.org

“ I FEEL SO LOVED AND FORTUNATE TO HAVE FOUND JFS JUST WHEN I NEEDED YOU. ”

OUR MISSION

To strengthen individuals, families, and the community by providing counseling and support services.

OUR VISION

A mentally, physically, and emotionally healthy community in which each person has equal access to high-quality support and the resources they need.

OUR PROMISE

We provide comprehensive support regardless of religion, race, socio-economic status, sexual orientation, gender identity, disability, or special need.

BOARD OF DIRECTORS

Clint Walker, Board President
Samantha Lukoff, Vice President of Strategic Planning
Dana Rubenstein, Vice President of Finance
Norman Pernick, Immediate Past President

Taylor Bolton
Erin Booker
Gina Chan
Adam Cutler

Gloria Fine
Heather Gibbons
Peter Hurd
Linda Jaworski

Benjamin Kniaz
Liz Sidel O'Neill
Christina Richter

Judy Scarborough
Avie Silver
Scott Tornek



DONATE NOW