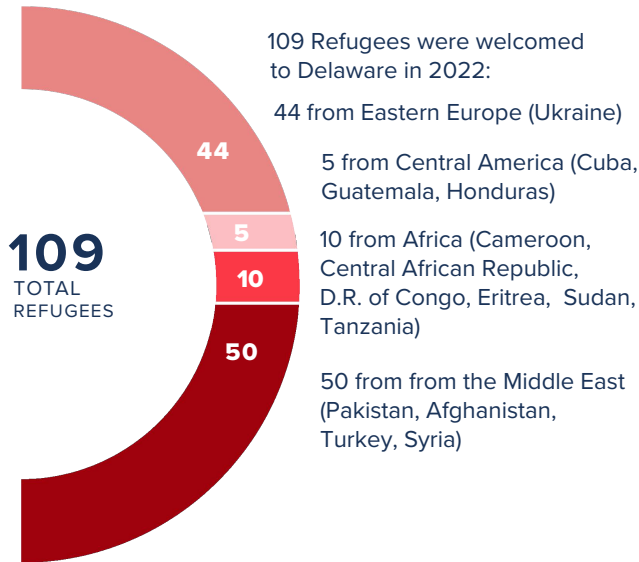


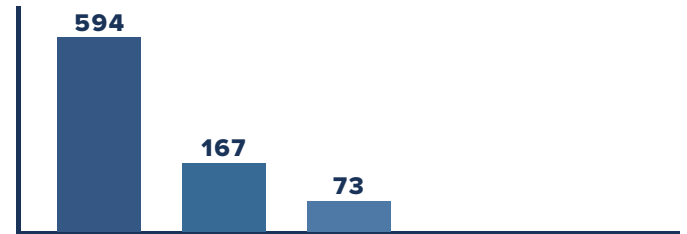
REFUGEE SERVICES



MENTAL HEALTH

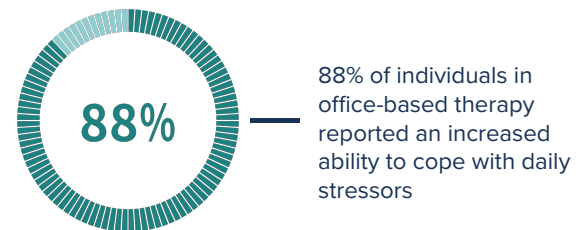
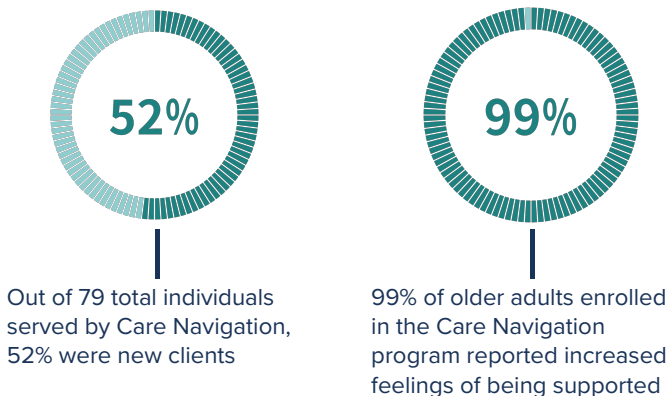
91%

91% of clients in office-based therapy reported that therapy has helped them enjoy a better quality of life



JFS served 1,043 clients in office-based therapy: 594 in New Castle County, 167 in Sussex County, and 73 from out of state

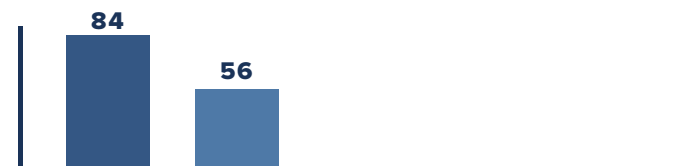
OLDER ADULT SERVICES



YOUTH ANXIETY

73%

73% of clients in the Youth Anxiety program demonstrated improvement in anxiety symptoms over the course of service



140 individuals were served in the Youth Anxiety program: 84 of the participants were children aged 5-10, and 56 were youth aged 11-17.

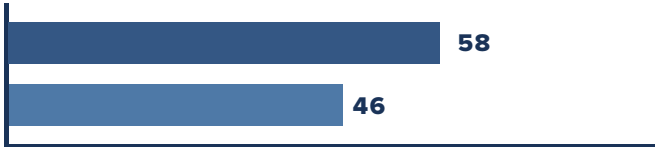
COMPASS

100%

100% of caregivers would recommend COMPASS to family or friends who have a loved one with dementia. 47 patients received personalized dementia care from COMPASS' interdisciplinary team

“From the engaging intake to the kind and thoughtful treatment my son received each day, I can't say enough good things about how valuable his time was at JFS.”

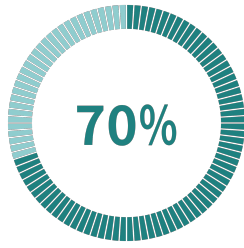
SUPPORT SERVICES



58 individuals were enrolled in the Promoting Safe & Stable Families (PSSF) program, and 46 clients were served at the B'nai B'rith House (BBH).



100% of participants in PSSF reported an increased knowledge of community resources and ability to access them, and reduced family stress



70% of older adults at BBH reported increased feelings of overall well-being

“JFS really helped save me and my family, I truly had no support and no plan for us. I wish more people knew about all the good that you do at your agency.”

OUR MISSION

To strengthen individuals, families, and the community by providing counseling and support services.

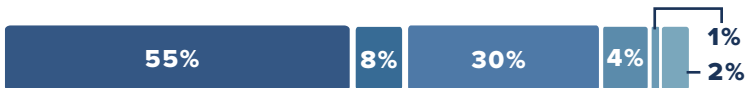
OUR VISION

A mentally, physically, and emotionally healthy community in which each person has equal access to high-quality support and the resources they need.

OUR PROMISE

We provide comprehensive support regardless of religion, race, socio-economic status, sexual orientation, gender identity, disability, or special need.

FINANCIALS



REVENUE	%	SOURCE
\$ 2,654,065	55	Government Grants & Contracts
\$ 389,276	8	Other Grants
\$ 1,459,936	30	Program Revenue
\$ 193,519	4	Contributions
\$ 44,937	1	United Way
\$ 100,000	2	Jewish Federation of Delaware
\$ 4,841,733		TOTAL



EXPENSES	%	DEPARTMENT
\$ 2,556,569	52	Counseling
\$ 418,362	9	Care Management
\$ 1,036,785	21	Youth & Family
\$ 737,659	15	Management & General
\$ 130,740	3	Fundraising
\$ 4,880,115		TOTAL

BOARD OF DIRECTORS

Peter Hurd, Board President
 Clint Walker, 1st Vice President
 Liz Sidel O'Neill, Vice President of Strategic Planning
 Linda Jaworski, Vice President of Finance
 Tayler Bolton
 Erin Booker
 Adam Cutler
 Gloria Fine
 Susan Finizio
 Ann Gualtieri
 Daniel Haas
 Stacy Horowitz
 Benjamin Kniaz
 Norman Pernick
 Christina Richter
 Yair Robinson
 Avie Silver
 Ginger Weiss

[JFSDELAWARE.ORG/DONATE](https://jfsdelaware.org/donate)